



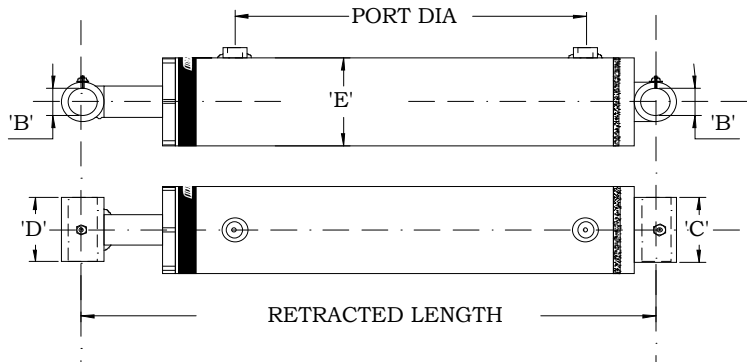
# MPI SERIES

Questions? Call us 03 8358 5877

## Multi-Purpose Industrial & Mobile Applications

### Features

- Hardened chrome plated rod
- Heavy duty welded rear male clevis
- Precision honed heavy wall hydraulic tube
- Hot rolled male rod end clevis
- Ductile iron gland and piston
- Threaded gland head, buttress to accept higher pressure capacities
- 2500PSI operating pressure
- Double acting
- Stocked in imperial sizes



Dimensions					
Bore Size	B	C	D	E	Ports(NPT)
1.5	0.77	2.25	2	2	1/2
-38.1	-19.56	-57.15	-50.8	-50.8	
2	1.02	2.75	2.25	2.5	3/8
-50.8	-25.91	-69.85	-57.15	-63.5	
2.5	1.02	3.25	2.25	3	1/2
-63.5	-25.91	-82.55	-57.15	-76.2	
3	1.02	3.75	2.25	3.5	1/2
-76.2	-25.91	-95.25	-57.15	-88.9	
3.5	1.27	4.25	2.25	4	1/2
-88.9	-32.26	-107.95	-57.15	-101.6	
4	1.52	4.75	2.5	4.5	1/2
-101.6	-38.61	-120.65	-63.5	-114.3	
5	1.77	5.75	3.25	5.5	1/2
-127	-44.96	-146.05	-82.55	-139.7	



**MPI SERIES: Multi-Purpose Industrial Cylinders**

Model		Weight kgs	Rod Dia.	Bore Size	Port Type	Centers closed "	Centers Open "	Stroke inch	Price			
MPI	154	4.1	1"	1.5	1/4NPT	12	16	4	TBA			
MPI	156	4.6				14	20	6	TBA			
MPI	158	5.2				16	24	8	TBA			
MPI	1510	5.8				18	28	10	TBA			
MPI	208	6.1	1-1/4"	2	3/8NPT	16	24	8	TBA			
MPI	2010	6.9				18	28	10	TBA			
MPI	2012	7.7				20	32	12	TBA			
MPI	2014	8.5				22	36	14	TBA			
MPI	2016	9.3				24	40	16	TBA			
MPI	2018	10.1				26	44	18	TBA			
MPI	2020	10.9				28	48	20	TBA			
MPI	2024	12.5				32	56	24	TBA			
MPI	2028	14.1				36	64	28	TBA			
MPI	2030	14.9				38	68	30	TBA			
MPI	2032	15.8				40	72	32	TBA			
MPI	2036	17.4				44	80	36	TBA			
MPI	2040	19				48	88	40	TBA			
MPI	2048	22.2				56	104	48	TBA			
MPI	258	9				1-1/2"	2.5	1/2NPT	16	24	8	TBA
MPI	2510	9.9							18	28	10	TBA
MPI	2512	10.9	20	32	12				TBA			
MPI	2514	11.9	22	36	14				TBA			
MPI	2516	12.9	24	40	16				TBA			
MPI	2518	13.9	26	44	18				TBA			
MPI	2520	14.9	28	48	20				TBA			
MPI	2524	16.9	32	56	24				TBA			
MPI	2528	18.8	36	64	28				TBA			
MPI	2530	19.8	38	68	30				TBA			
MPI	2532	20.8	40	72	32				TBA			
MPI	2536	22.8	44	80	36				TBA			
MPI	2540	24.8	48	88	40				TBA			
MPI	2548	28.7	56	104	48				TBA			



**MPI SERIES: Multi-Purpose Industrial Cylinders**

Model		Weight kgs	Rod Dia.	Bore Size	Port Type	Centers closed "	Centers Open "	Stroke inch	Price
MPI	30 8	11.2	1-1/2"	3	1/2NPT	16	24	8	TBA
MPI	30 10	12.3				18	28	10	TBA
MPI	30 12	13.4				20	32	12	TBA
MPI	30 14	14.5				22	36	14	TBA
MPI	30 16	15.6				24	40	16	TBA
MPI	30 18	16.7				26	44	18	TBA
MPI	30 20	17.8				28	48	20	TBA
MPI	30 24	20				32	56	24	TBA
MPI	30 28	22.2				36	64	28	TBA
MPI	30 30	23.3				38	68	30	TBA
MPI	30 32	24.3				40	72	32	TBA
MPI	30 36	26.5				44	80	36	TBA
MPI	30 40	28.7				48	88	40	TBA
MPI	30 48	33.1				56	104	48	TBA
MPI	35 8	14.8	1-3/4"	3.5	1/2NPT	18	26	8	TBA
MPI	35 10	16.2				20	30	10	TBA
MPI	35 12	17.6				22	34	12	TBA
MPI	35 14	18.9				24	38	14	TBA
MPI	35 16	20.3				26	42	16	TBA
MPI	35 18	21.6				28	46	18	TBA
MPI	35 20	23				30	50	20	TBA
MPI	35 24	25.7				34	58	24	TBA
MPI	35 28	28.4				38	66	28	TBA
MPI	35 30	29.8				40	70	30	TBA
MPI	35 32	31.2				42	74	32	TBA
MPI	35 36	33.9				46	82	36	TBA
MPI	35 40	36.6				50	90	40	TBA
MPI	35 48	42				58	106	48	TBA



**MPI SERIES: Multi-Purpose Industrial Cylinders**

Model		Weight kgs	Rod Dia.	Bore Size	Port Type	Centers closed "	Centers Open "	Stroke inch	Price
MPI	40 8	18.5	2"	4	1/2NPT	18	26	8	TBA
MPI	40 10	20.2				20	30	10	TBA
MPI	40 12	21.9				22	34	12	TBA
MPI	40 14	23.5				24	38	14	TBA
MPI	40 16	25.2				26	42	16	TBA
MPI	40 18	26.8				28	46	18	TBA
MPI	40 20	28.5				30	50	20	TBA
MPI	40 24	31.8				34	58	24	TBA
MPI	40 28	35.1				38	66	28	TBA
MPI	40 30	36.8				40	70	30	TBA
MPI	40 32	38.4				42	74	32	TBA
MPI	40 36	41.7				46	82	36	TBA
MPI	40 40	45				50	90	40	TBA
MPI	40 48	51.7				58	106	48	TBA
MPI	50 8	32.6	2-1/2"	5	1/2NPT	20	28	8	TBA
MPI	50 10	34.5				22	32	10	TBA
MPI	50 12	36.5				24	36	12	TBA
MPI	50 14	38.4				26	40	14	TBA
MPI	50 16	40.4				28	44	16	TBA
MPI	50 18	42.4				30	48	18	TBA
MPI	50 20	44.3				32	52	20	TBA
MPI	50 24	48.2				36	60	24	TBA
MPI	50 28	52.2				40	68	28	TBA
MPI	50 30	54.1				42	72	30	TBA
MPI	50 36	60				48	84	36	TBA
MPI	50 40	63.9				52	92	40	TBA
MPI	50 48	71.7	60	108	48	TBA			