

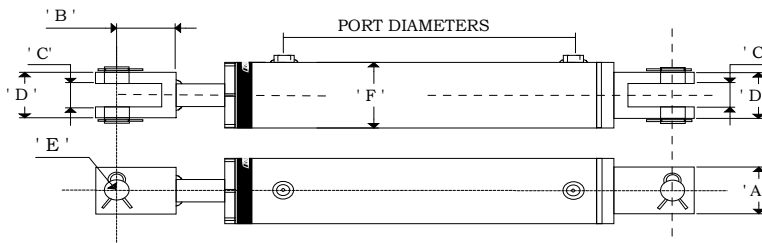
MPA SERIES

Multi-Purpose Agricultural Cylinders

Questions? Call us 03 8358 5877

Features

- Hardened chrome plated rod
- Heavy duty welded rear clevis construction
- Precision honed heavy wall hydraulic tube
- Forged cast steel clevises
- Ductile iron gland and piston
- Threaded gland head, buttress to accept higher pressure capacities
- 2500PSI operating pressure
- Double acting
- Stocked in imperial sizes



Dimensions							
Bore Size	A	B	C	D	E	F	Ports(NPT)
2 -50.8	2.125 -53.975	2.125 -53.975	1.125 -28.575	2.07 -52.578	1 -25.4	2.5 -63.5	3/8
2.5 -63.5	2.125 -53.975	2.125 -53.975	1.125 -28.575	2.07 -52.578	1 -25.4	3 -76.2	1/2
3 -76.2	2.125 -53.975	2.125 -53.975	1.125 -28.575	2.07 -52.578	1 -25.4	3.5 -88.9	1/2
3.5 -88.9	2.125 -53.975	2.125 -53.975	1.125 -28.575	2.07 -52.578	1 -25.4	4 -101.6	1/2
4 -101.6	2 -50.8	2 -50.8	1.125 -28.575	2.07 -52.578	1 -25.4	4.5 -114.3	1/2
5 -127	2 -50.8	2 -50.8	1.5 -38.1	2.44 -61.976	1 -25.4	5.5 -139.7	1/2



MPA SERIES: Multi-Purpose Agricultural Cylinders

Model		Weight kgs	Rod Dia.	Bore Size	Port Type	Centers closed "	Centers Open "	Stroke inch	Price
MPA	20 4	5.8	1-1/4"	2	3/8NPT	14.25	18.25	4	TBA
MPA	20 6	6.6				16.25	22.25	6	TBA
MPA	20 8	7.4				18.25	28.25	8	TBA
MPA	20 10	8.1				20.25	30.25	10	TBA
MPA	20 12	8.8				22.25	34.25	12	TBA
MPA	20 14	9.6				24.25	38.25	14	TBA
MPA	20 16	10.4				26.25	42.25	16	TBA
MPA	20 18	11.1				28.25	46.25	18	TBA
MPA	20 20	11.9				30.25	50.25	20	TBA
MPA	20 24	13.4				34.25	58.25	24	TBA
MPA	20 28	14.9				38.25	66.25	28	TBA
MPA	20 30	15.7				40.25	70.25	30	TBA
MPA	20 32	16.4				42.25	74.25	32	TBA
MPA	20 34	17.2				44.25	78.25	34	TBA
MPA	20 36	18	46.25	82.25	36	TBA			
MPA	25 4	7.7	1-1/2"	2.5	1/2NPT	14.25	18.25	4	TBA
MPA	25 6	8.7				16.25	22.25	6	TBA
MPA	25 8	9.7				20.25	28.25	8	TBA
MPA	25 10	10.6				20.25	30.25	10	TBA
MPA	25 12	11.6				22.25	34.25	12	TBA
MPA	25 14	12.6				24.25	38.25	14	TBA
MPA	25 16	13.5				26.25	42.25	16	TBA
MPA	25 18	14.5				28.25	46.25	18	TBA
MPA	25 20	15.5				30.25	50.25	20	TBA
MPA	25 24	17.4				34.25	58.25	24	TBA
MPA	25 28	19.3				38.25	66.25	28	TBA
MPA	25 30	20.3				40.25	70.25	30	TBA
MPA	25 32	21.3				42.25	74.25	32	TBA
MPA	25 34	22.2				44.25	78.25	34	TBA
MPA	25 36	23.2	46.25	82.25	36	TBA			



MPA SERIES: Multi-Purpose Agricultural Cylinders

Model	Weight kgs	Rod Dia.	Bore Size	Port Type	Centers closed "	Centers Open "	Stroke inch	Price
MPA 304	9.9	1-1/2"	3	1/2NPT	14.25	18.25	4	TBA
MPA 306	11				16.25	22.25	6	TBA
MPA 308	12.2				20.25	28.25	8	TBA
MPA 3010	13.2				20.25	30.25	10	TBA
MPA 3012	14.3				22.25	34.25	12	TBA
MPA 3014	15.4				24.25	38.25	14	TBA
MPA 3016	16.6				26.25	42.25	16	TBA
MPA 3018	17.7				28.25	46.25	18	TBA
MPA 3020	18.8				30.25	50.25	20	TBA
MPA 3024	21				34.25	58.25	24	TBA
MPA 3028	23.2				38.25	66.25	28	TBA
MPA 3030	24.3				40.25	70.25	30	TBA
MPA 3032	25.5				42.25	74.25	32	TBA
MPA 3034	26.6				44.25	78.25	34	TBA
MPA 3036	27.7				46.25	82.25	36	TBA
MPA 354	11.9	1-3/4"	3.5	1/2NPT	14.25	18.25	4	TBA
MPA 356	13.3				16.25	22.25	6	TBA
MPA 358	14.7				20.25	28.25	8	TBA
MPA 3510	16.1				20.25	30.25	10	TBA
MPA 3512	17.5				22.25	34.25	12	TBA
MPA 3514	18.9				24.25	38.25	14	TBA
MPA 3516	20.3				26.25	42.25	16	TBA
MPA 3518	21.8				28.25	46.25	18	TBA
MPA 3520	23.2				30.25	50.25	20	TBA
MPA 3524	26				34.25	58.25	24	TBA
MPA 3528	28.8				38.25	66.25	28	TBA
MPA 3530	30.2				40.25	70.25	30	TBA
MPA 3532	31.7				42.25	74.25	32	TBA
MPA 3534	33.1				44.25	78.25	34	TBA
MPA 3536	34.5				46.25	82.25	36	TBA



MPA SERIES: Multi-Purpose Agricultural Cylinders

Model		Weight kgs	Rod Dia.	Bore Size	Port Type	Centers closed "	Centers Open "	Stroke inch	Price
MPA	40 4	13.9	2"	4"	1/2NPT	14.25	18.25	4	TBA
MPA	40 6	15.6				16.25	22.25	6	TBA
MPA	40 8	17.8				20.25	28.25	8	TBA
MPA	40 10	19.1				20.25	30.25	10	TBA
MPA	40 12	20.9				22.25	34.25	12	TBA
MPA	40 14	22.7				24.25	38.25	14	TBA
MPA	40 16	24.4				26.25	42.25	16	TBA
MPA	40 18	26.2				28.25	46.25	18	TBA
MPA	40 20	27.9				30.25	50.25	20	TBA
MPA	40 24	31.5				34.25	58.25	24	TBA
MPA	40 28	35				38.25	66.25	28	TBA
MPA	40 30	36.8				40.25	70.25	30	TBA
MPA	40 32	38.5				42.25	74.25	32	TBA
MPA	40 34	40.3				44.25	78.25	34	TBA
MPA	40 36	42				46.25	82.25	36	TBA
MPA	50 4	29	2-1/2"	5	1/2NPT	16.25	20.25	4	TBA
MPA	50 6	31				18.25	24.25	6	TBA
MPA	50 8	33				20.25	28.25	8	TBA
MPA	50 10	35				22.25	32.25	10	TBA
MPA	50 12	37				24.25	36.25	12	TBA
MPA	50 14	39				26.25	40.25	14	TBA
MPA	50 16	41				28.25	44.25	16	TBA
MPA	50 18	43				30.25	48.25	18	TBA
MPA	50 20	45				32.25	52.25	20	TBA
MPA	50 24	49				36.25	60.25	24	TBA
MPA	50 28	53				40.25	68.25	28	TBA
MPA	50 30	55				42.25	72.25	30	TBA
MPA	50 32	57				44.25	76.25	32	TBA
MPA	50 34	59				46.25	80.25	34	TBA
MPA	50 36	61				48.25	84.25	36	TBA